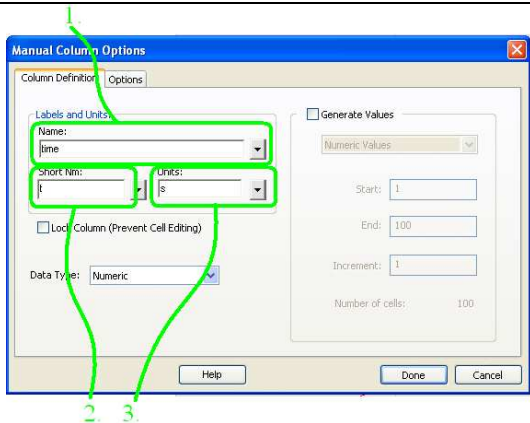
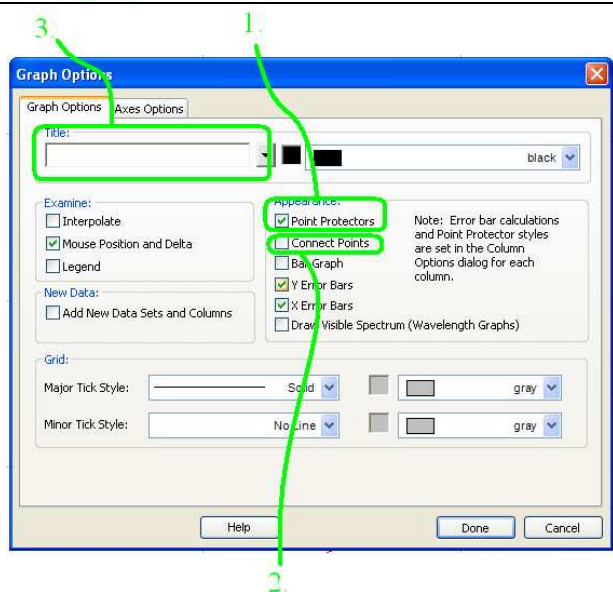




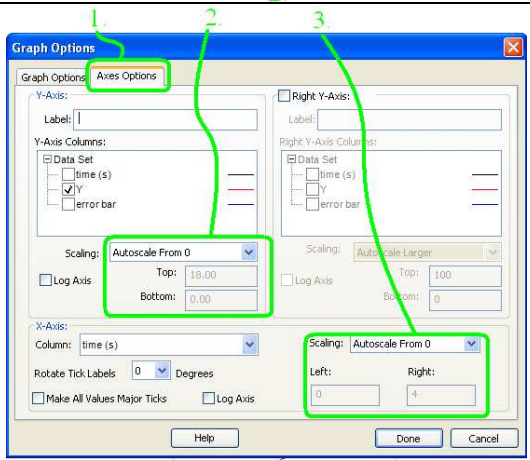
- Start *Logger Pro*
- Enter your data into the appropriate columns.
- Double-click the header of each column in the data table. Give the column a meaningful name (1), a shorthand name (2), and especially, the correct units (3).



- As a general rule, you should tidy up the graph.
- Double-click on any empty portion.
- Turn on point protectors (1)
- Turn off connecting points (2)
- Give the graph a useful title (3)

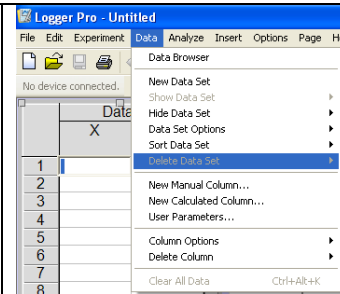


- Make sure the axes are correctly scaled.
- In general, this means auto-scaled, but you can also set the bounds.
- Double-click on an empty portion of the graph. Select



Adding error bars is treated on the next page.

- Use Data -> New Manual Column to create a column for your error bar values.
- Enter these into the new column.



- Double-click of the header for the column of data to which your error bars apply. In the example, the column which varies is Y:

Data Set		
X	Y	error bar
1	0.90	0.08
2	4.02	0.07
3	9.11	0.12
4	15.95	0.05

- Select the Options tab (1).
- Activate error bars (2).
- Select "Use columns" (3).
- Use the drop-down menu (4) to select the column you created.
- Repeat for every column that has error bars.

